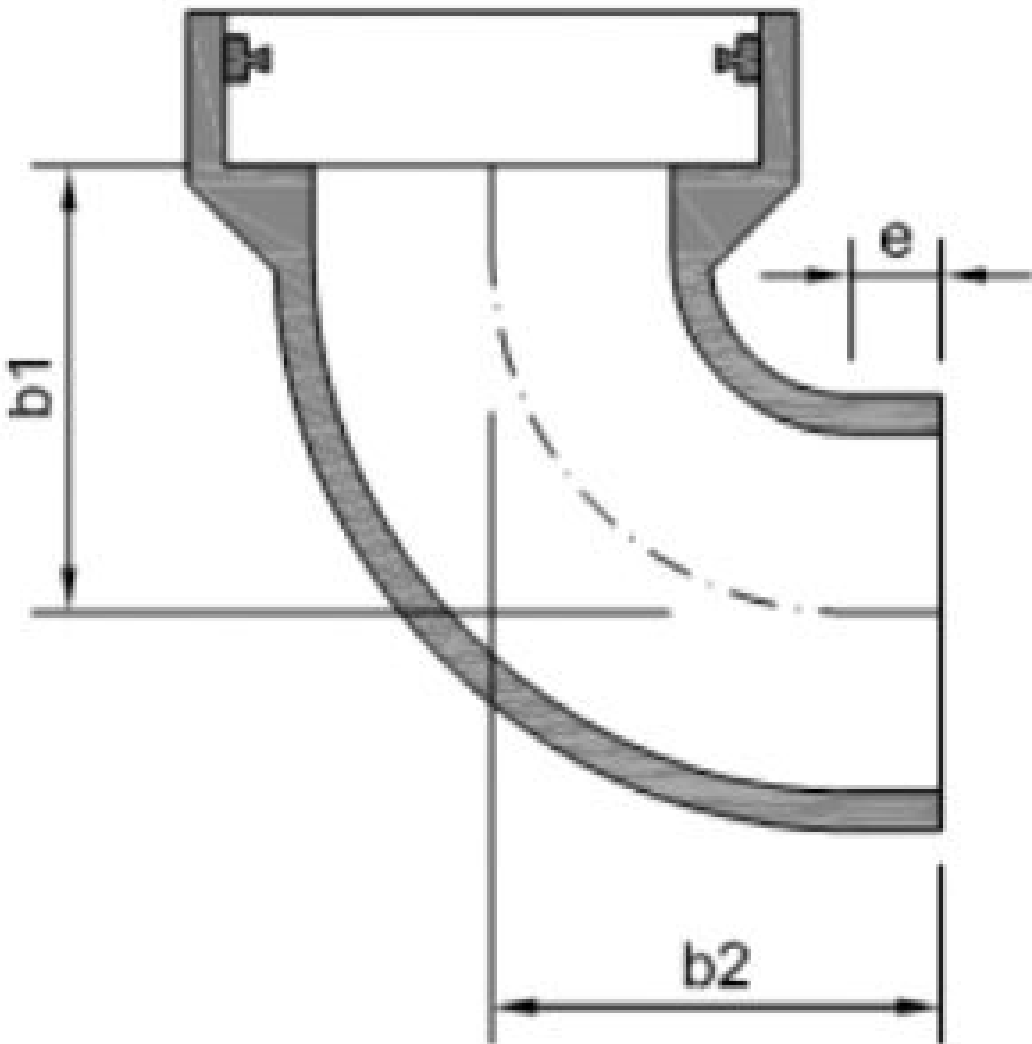


131 38 124 113 107 125 123 114 115 126 32 108 116 128 118 119 120 111 110 127 117 129 112 106 130 36

KERA.BASE  
BENDS



TECHNICAL DRAWING



NOMINAL SIZE DN 150

100

300

ANGLE

15°

30°

45°

90°

JOINT

K

L



WEIGHT

TKL

10 kg/piece

34

MEASUREMENTS

Nominal size	Dimensions	90° +/- 5°		
DN	e max. mm	r min mm	b1 mm	b2 mm
150	75	150	220	220

BRIEF DESCRIPTION

\* 15° ± 3°; 30° ± 4°; 45° ± 5°; 90° ± 5°

Dimensions b1 and b2 are standard gauges. Bends of 90° are only used for the connection of downpipes. They are not permissible within drainage system lines Other dimensions and compressive forces such as pipes. Larger sizes on request.

Vitrified clay pipes and fittings are standardised in EN 295-1. Supplementary Requirements defines the certification program ZP WN 295.

All measurements - especially when connecting to third-party products - must be checked and depend on the specifications of EN 295 and on the certification program ZP WN 295. Subject to technical changes.



Bend 15°



Bend 30°



Bend 90°